



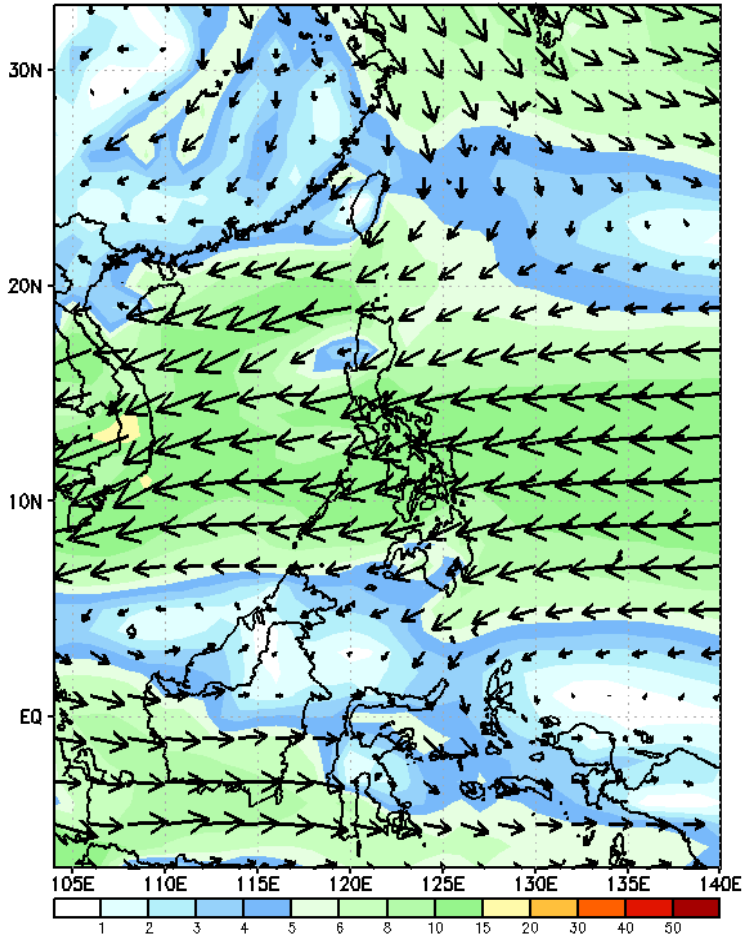
# Week 1 & Week 2 Forecast for the Philippines using GEFS Model



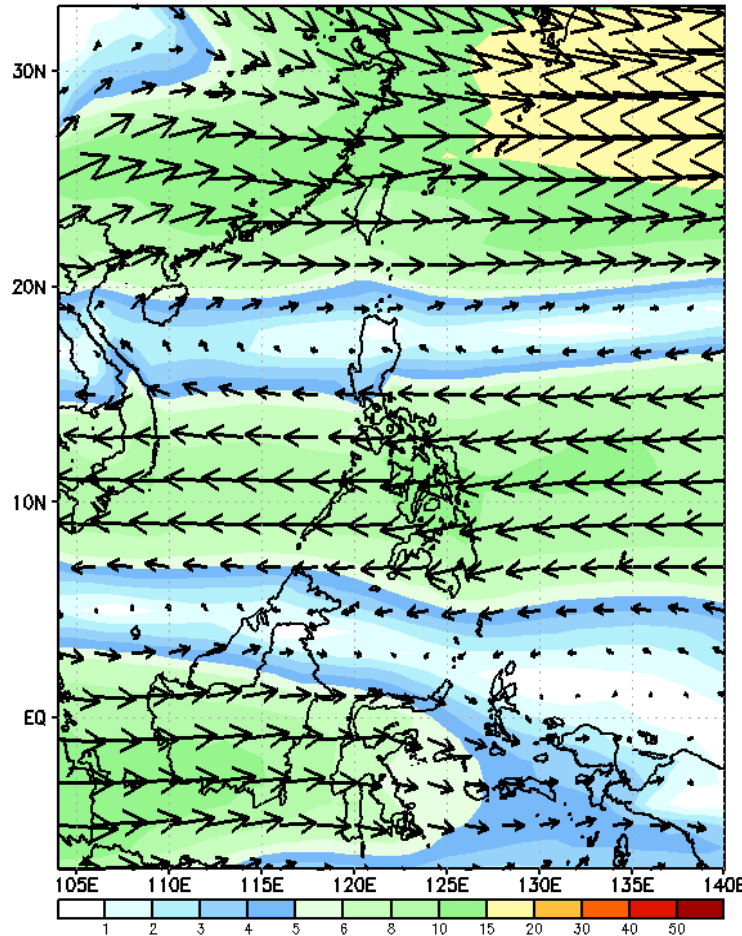
# GEFS Week-1 Wind Forecasts:

Week 1: Dec 11-17, 2024

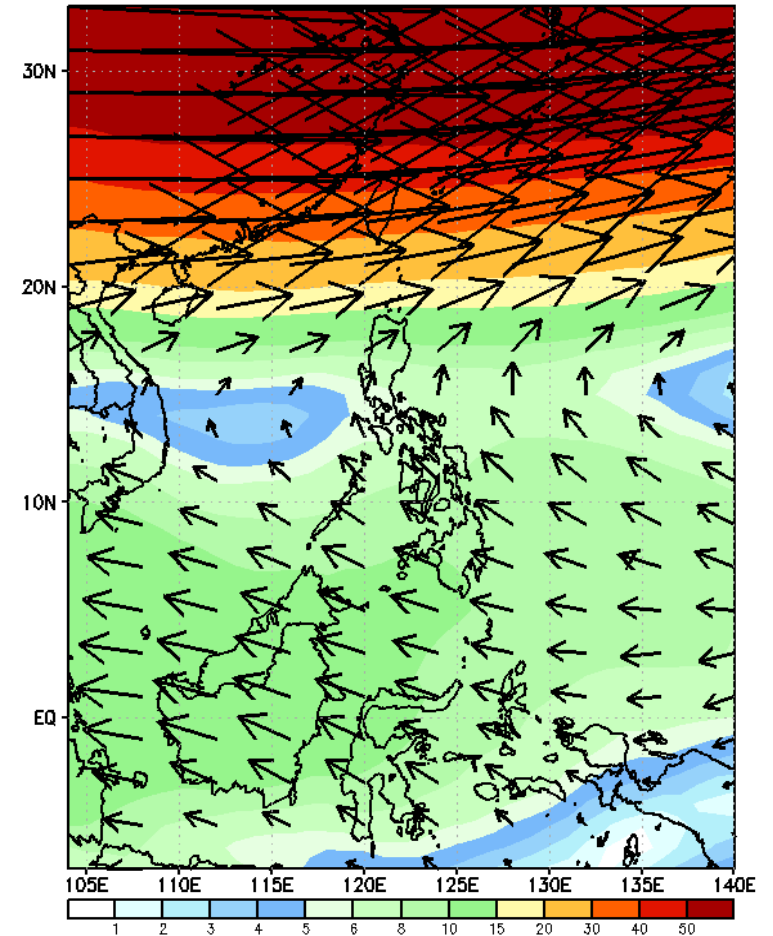
GEFS Week-1 850-hPa Wind Total  
Valid: 20241211 - 20241217



GEFS Week-1 700-hPa Wind Total  
Valid: 20241211 - 20241217

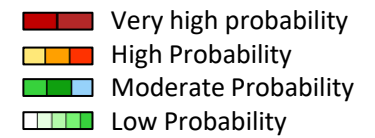


GEFS Week-1 200-hPa Wind Total  
Valid: 20241211 - 20241217



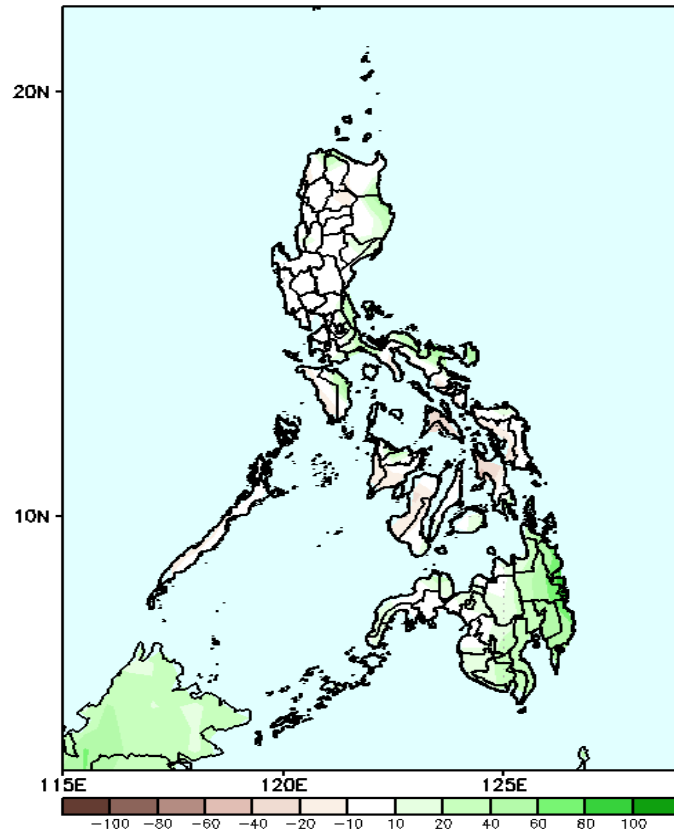
Northeast Monsoon affecting Eastern Luzon while Easterlies affecting the rest of the country during the forecast period

# Precipitation Anomaly and Exceedance Probability > 25/50 mm



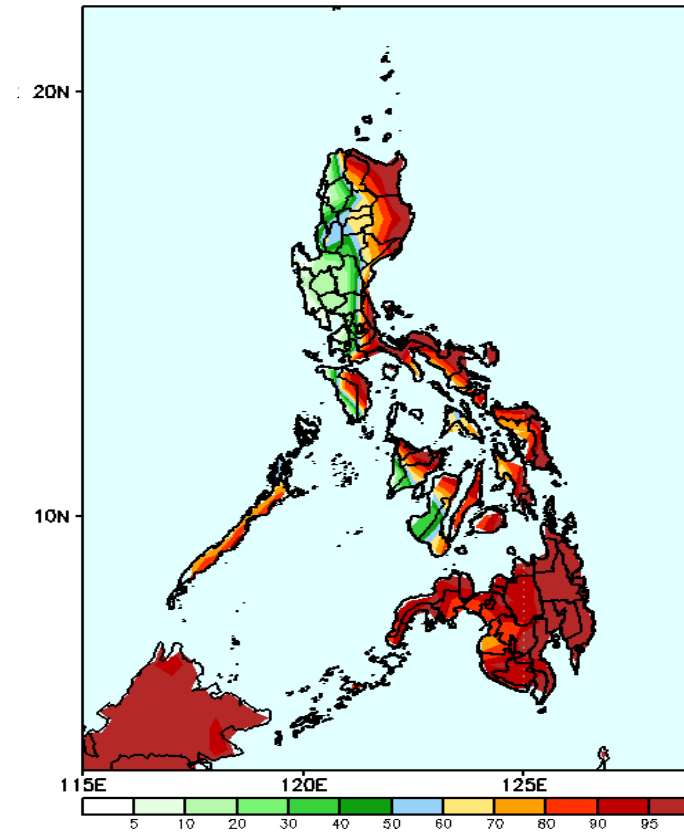
## Week 1: Dec 11-17, 2024

GEFS Week-1 Precip Anomaly  
Valid: 20241211 - 20241217



Increase of rainfall of 10-60mm is most likely in the eastern parts of Luzon, and Eastern and Southern Mindanao.

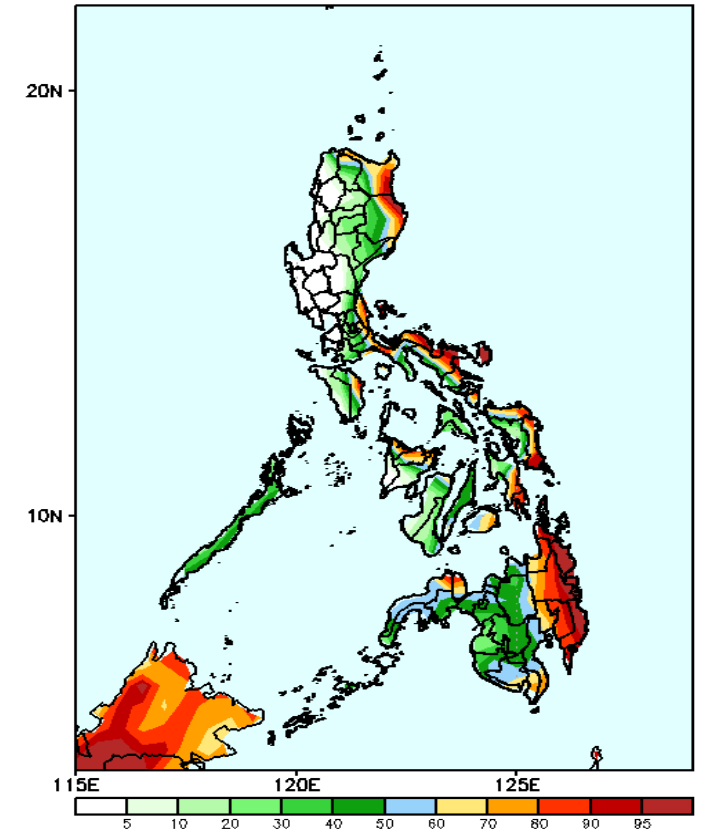
GEFS Week-1 Exceedance Prob. > 25mm  
Valid: 20241211 - 20241217



### Probability to Exceed 25mm

- High to very high over Apayao and most of Eastern Luzon, Capiz, Aklan, eastern part of Iloilo, Central and Eastern Visayas and most of Mindanao;
- Moderate to high over the eastern part of Ilocos Norte, the rest of CAR, NCR, and the rest of Southern Luzon;
- Low to moderate over the rest of Luzon

GEFS Week-1 Exceedance Prob. > 50mm  
Valid: 20241211 - 20241217



### Probability to Exceed 50mm

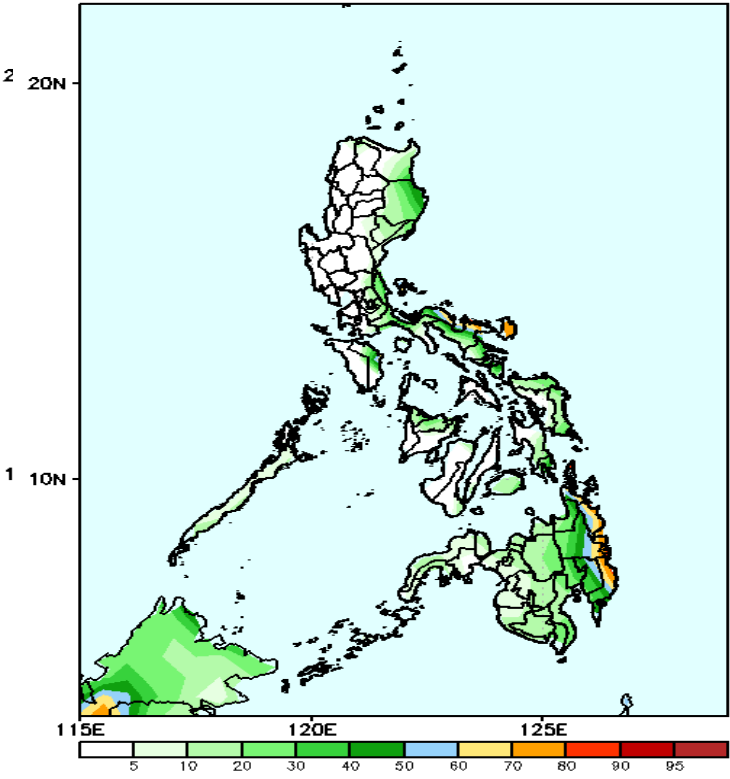
- High to very high over Eastern Mindanao and the easternmost portions of Cagayan Valley, Bicol Region, and Eastern Visayas;
- Moderate to high over the rest of Cagayan Valley and Bicol Region, Quezon, Aurora, Oriental Mindoro, Palawan, Aklan, Capiz, northern part of Iloilo and Negros Occidental, Cebu, Bohol, the rest of Eastern Visayas, and the rest of Mindanao.
- Low to moderate over the rest of the country.

# Exceedance Probability > 100/150/200 mm

- Very high probability
- High Probability
- Moderate Probability
- Low Probability

## Week 1: Dec 11-17, 2024

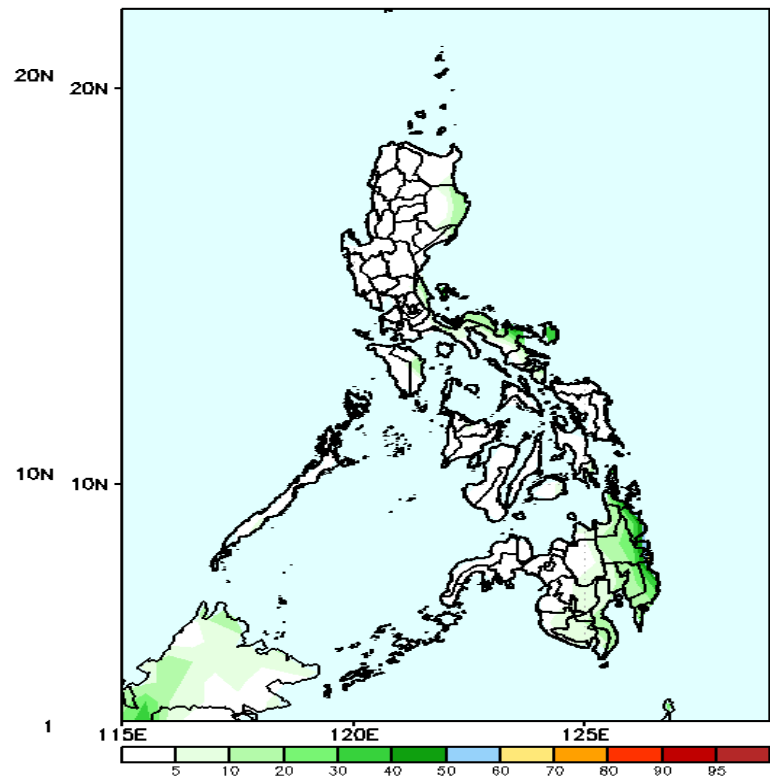
GEFS Week-1 Exceedance Prob. > 100mm  
Valid: 20241211 - 20241217



### Probability to Exceed 100mm

- Moderate to high over Polillo Islands, northern part of Camarines provinces, Catanduanes, and eastern portion of Mindanao;
- Low to moderate over the rest of Eastern Luzon, Visayas and Mindanao;
- Low over the rest of the country.

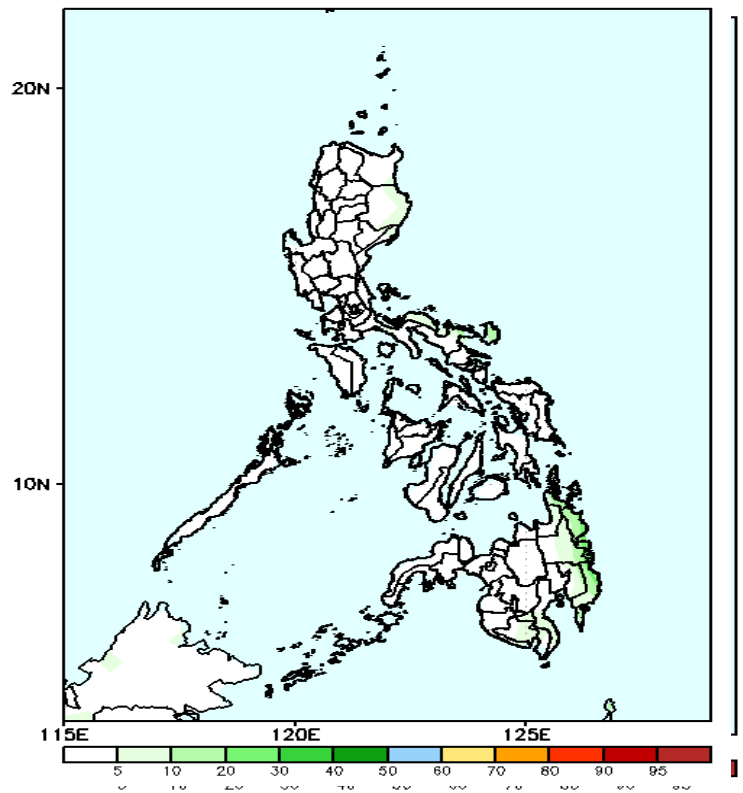
GEFS Week-1 Exceedance Prob. > 150mm  
Valid: 20241211 - 20241217



### Probability to Exceed 150mm

- Low across the country.

GEFS Week-1 Exceedance Prob. > 200mm  
Valid: 20241211 - 20241217



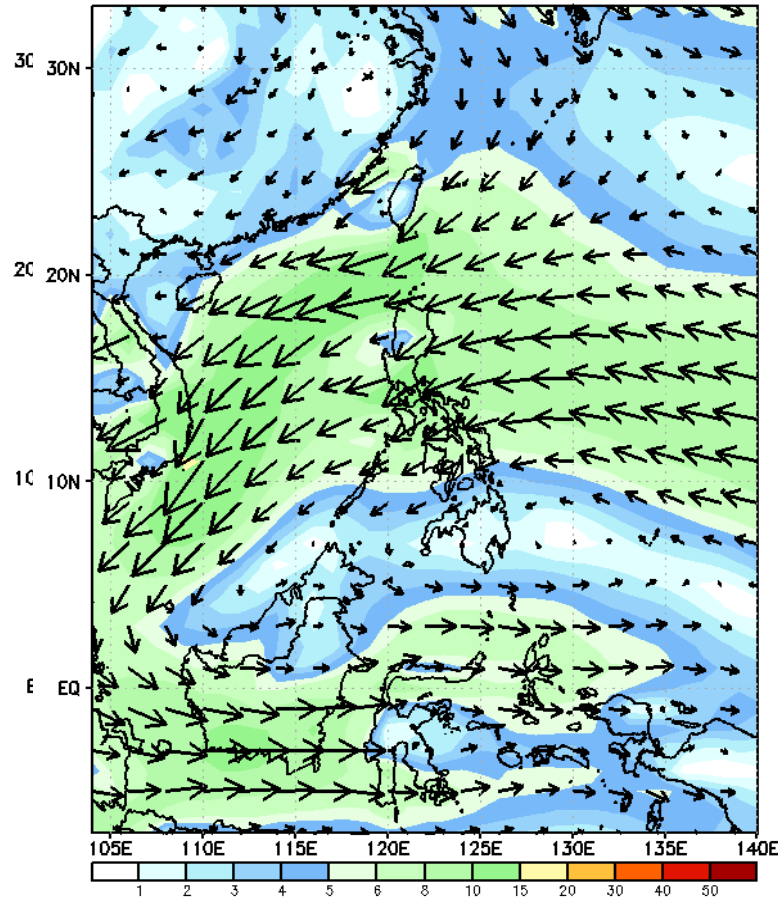
### Probability to Exceed 200mm

- Low across the country.

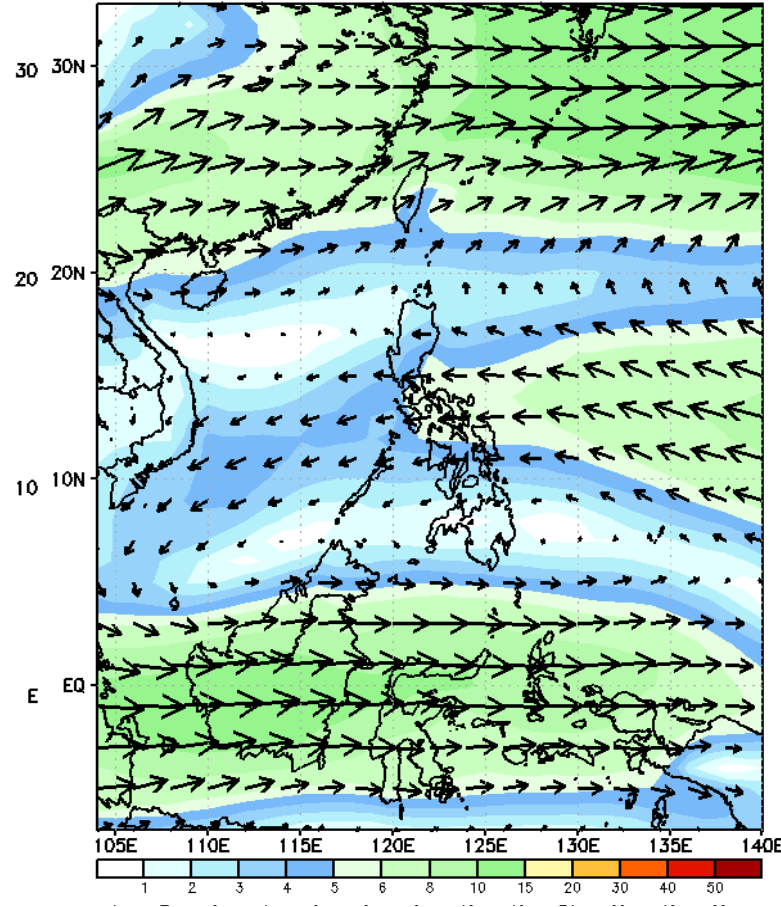
# GEFS Week-2 Wind Forecasts:

Week 2: Dec 18-24, 2024

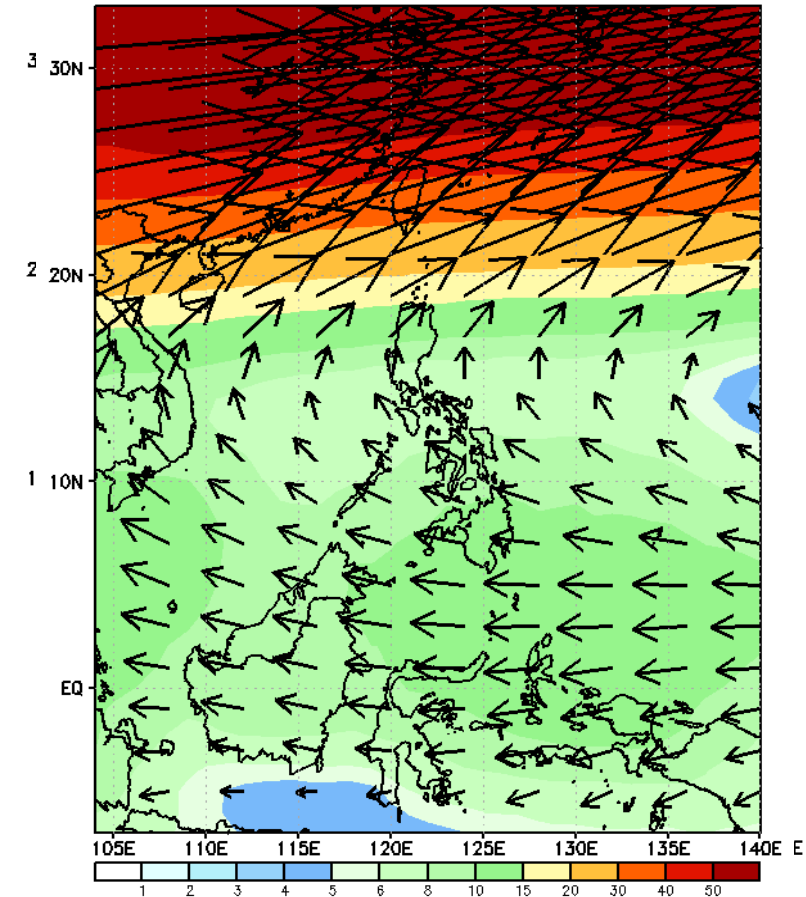
GEFS Week-2 850-hPa Wind Total  
Valid: 20241218 - 20241224



GEFS Week-2 700-hPa Wind Total  
Valid: 20241218 - 20241224



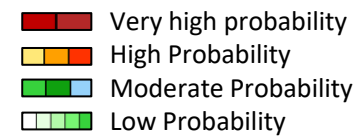
GEFS Week-2 200-hPa Wind Total  
Valid: 20241218 - 20241224



Northeast Monsoon will likely affect Northern Luzon while Easterlies will likely affect the rest of the country during the forecast period

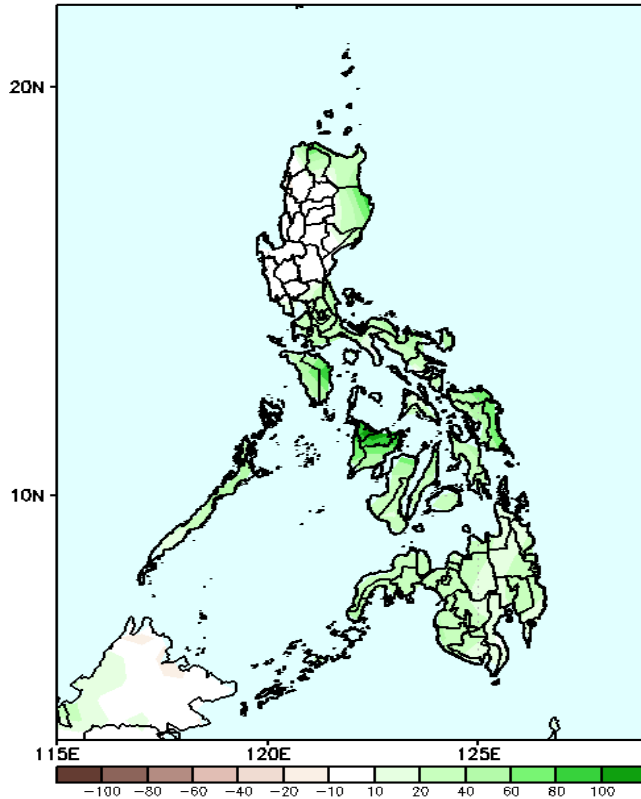


# Precipitation Anomaly and Exceedance Probability > 25/50 mm



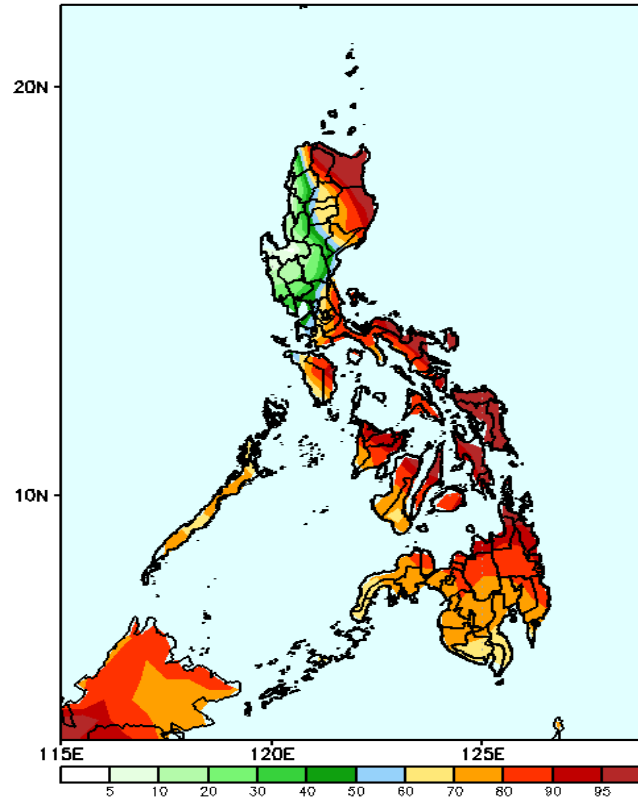
Week 2: Dec 18-24, 2024

GEFS Week-2 Precip Anomaly  
Valid: 20241218 - 20241224



Increase of Rainfall of 20-80mm is most likely in most parts of Visayas and Mindanao.

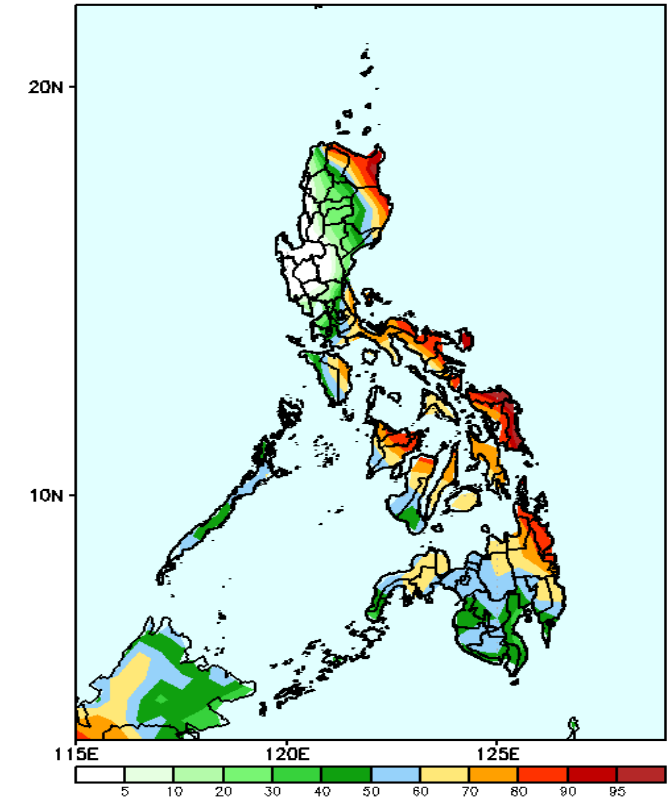
GEFS Week-2 Exceedance Prob. > 25mm  
Valid: 20241218 - 20241224



## Probability to Exceed 25mm

- High to very high over Apayao and most of Eastern Luzon, Visayas and Mindanao;
- Moderate to high over the eastern part of Ilocos Norte and CAR, NCR, and the rest of Southern Luzon;
- Low to Moderate over the rest of Luzon.

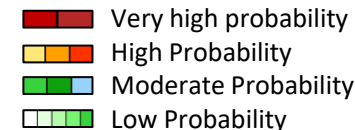
GEFS Week-2 Exceedance Prob. > 50mm  
Valid: 20241218 - 20241224



## Probability to Exceed 50mm

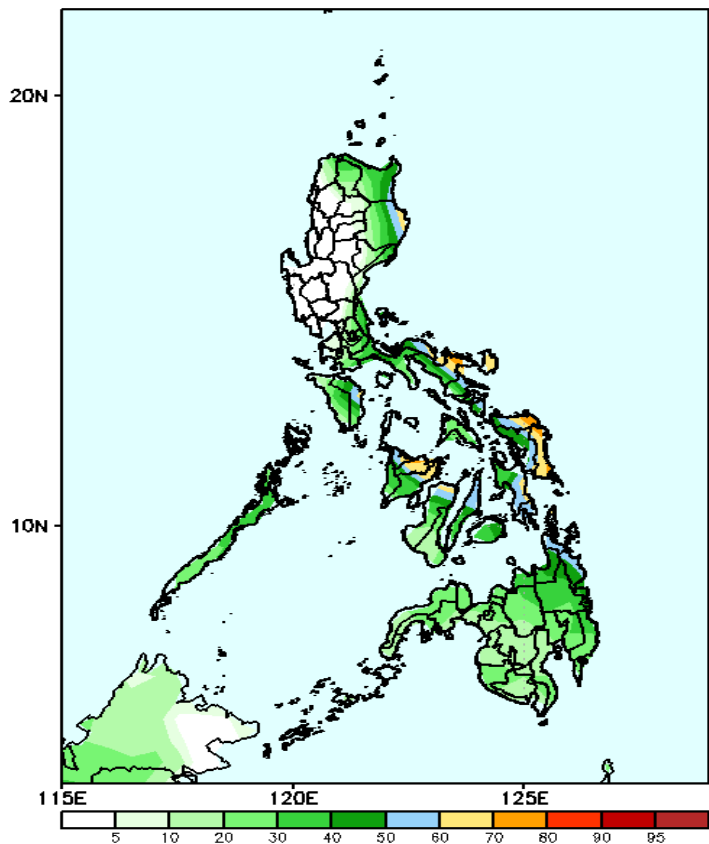
- High to a very high over most of Cagayan, Polillo Island, Bicol Region, Eastern Visayas, Aklan, Capiz, the northern part of Iloilo, and Caraga;
- Moderate to high over Apayao, the rest of Cagayan Valley, the northern part of Ilocos Norte and Aurora, Quezon, Rizal, Laguna, NCR, Batangas, MIMAROPA, and the rest of Visayas, and Mindanao;
- Low to moderate over the rest of Luzon.

# Exceedance Probability > 100/150/200 mm



## Week 2: Dec 18-24, 2024

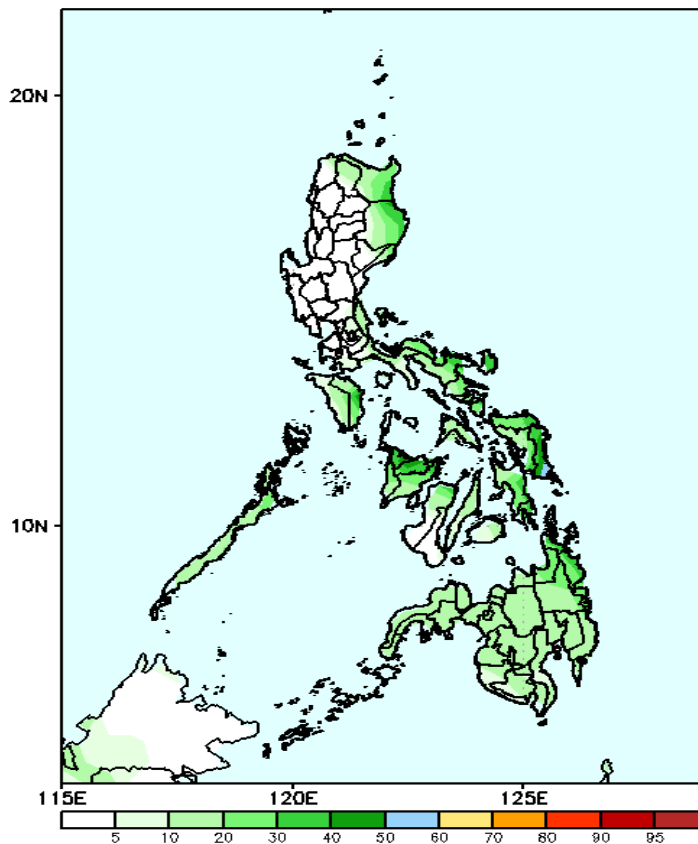
GEFS Week-2 Exceedance Prob. > 100mm  
Valid: 20241218 - 20241224



### Probability to Exceed 100mm

- Moderate to high over the easternmost part of Isabela, Bicol Region, Oriental Mindoro. Aklan, Capiz, northern part of Iloilo, Negros and Cebu, and Eastern Visayas;
- Low to moderate of the rest of Eastern and Southern Luzon and most of Visayas and Mindanao;
- Low over the rest of Luzon.

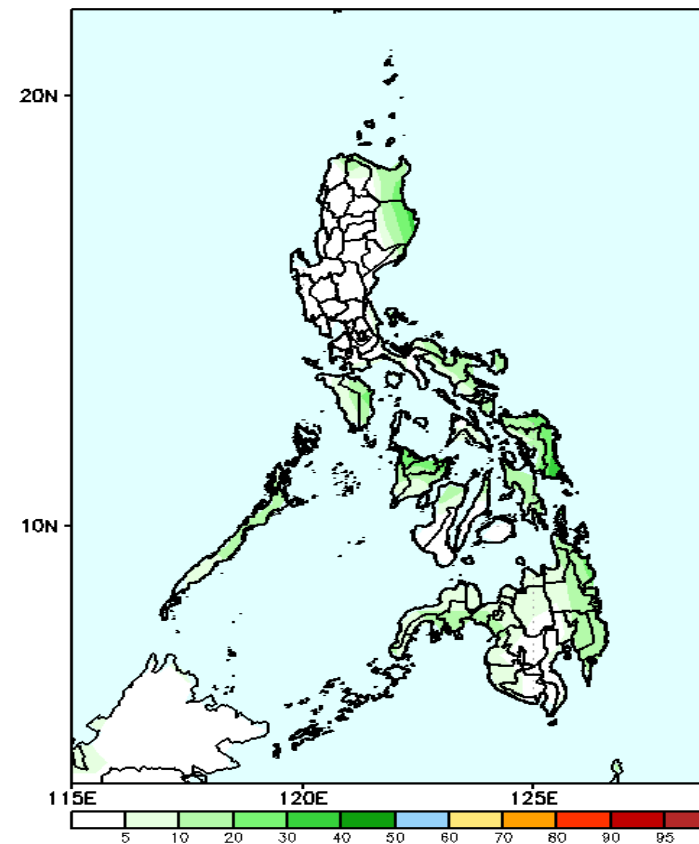
GEFS Week-2 Exceedance Prob. > 150mm  
Valid: 20241218 - 20241224



### Probability to Exceed 150mm

- Low to moderate over the eastern sections of the country.
- Low over the rest of the country.

GEFS Week-2 Exceedance Prob. > 200mm  
Valid: 20241218 - 20241224

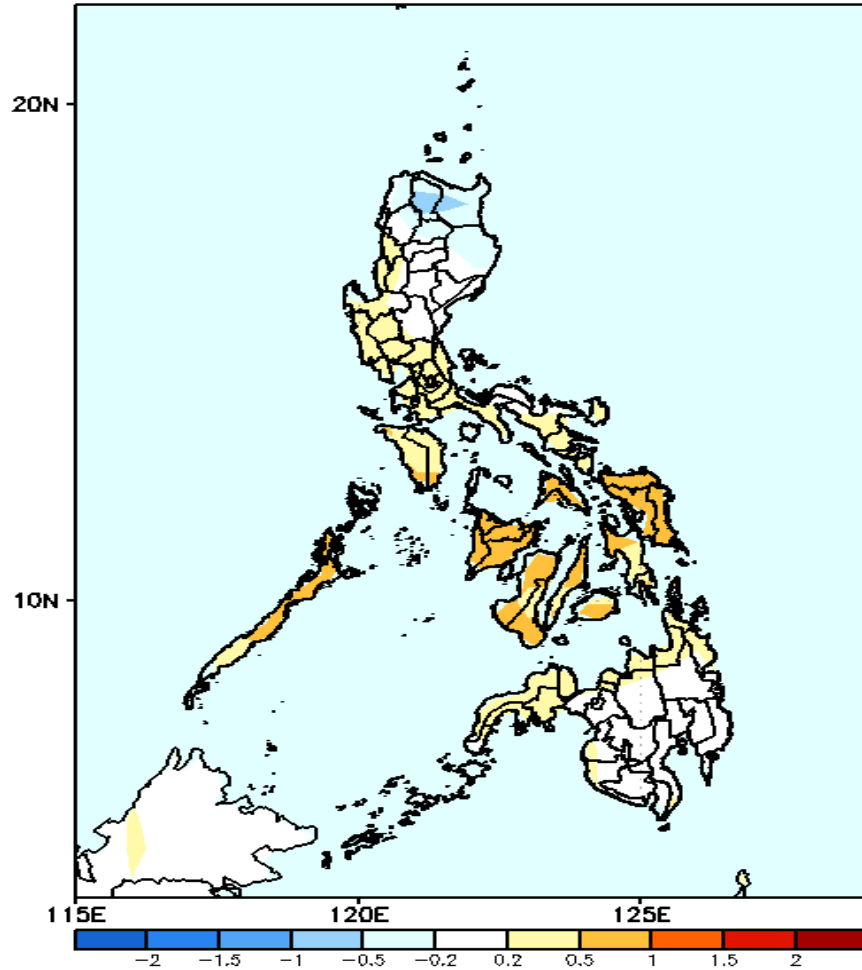


### Probability to Exceed 200mm

- Low across the country.

# GEFS Week-1 & 2 Forecasts: T2m Anomaly

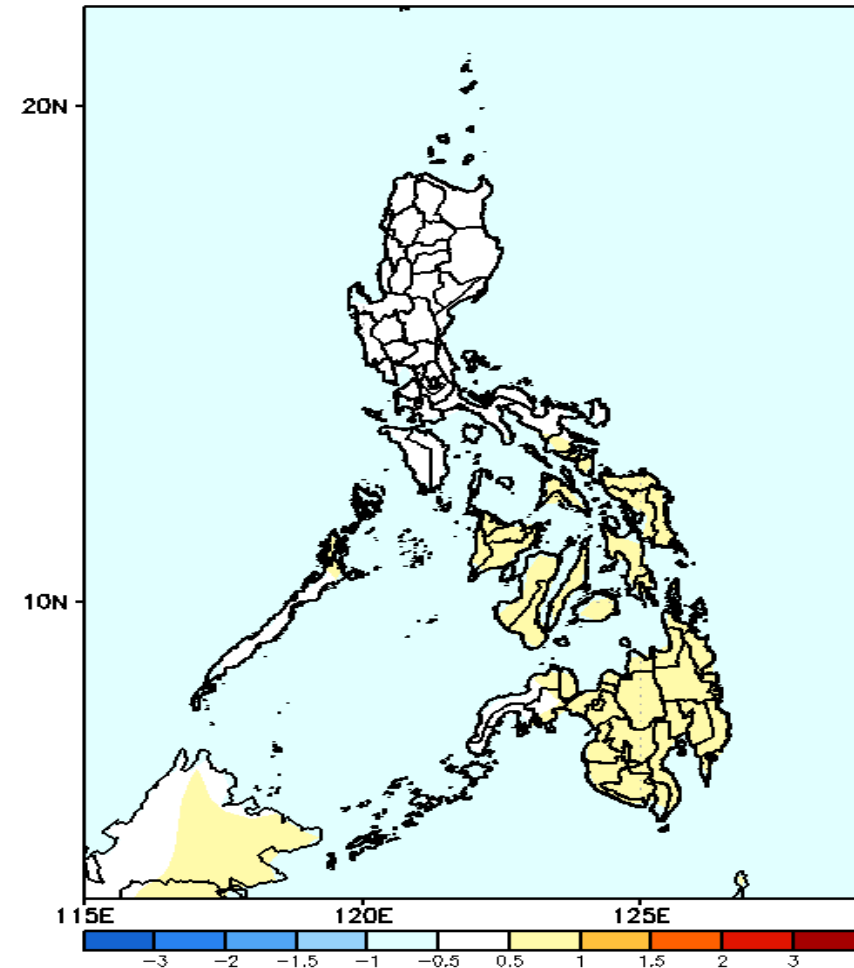
GEFS Week-1 T2m Anomaly  
Valid: 20241211 - 20241217



## 2m Temperature Week 1: Dec 11-17, 2024

Near to warmer than average surface air temperature will likely be experienced in most parts of the country except in some areas in northern Luzon where slightly cooler temperature than average surface air temperature is expected..

GEFS Week-2 T2m Anomaly  
Valid: 20241218 - 20241224



## 2m Temperature Week 2: Dec 18-24, 2024

Near to slightly above average surface air temperature will likely be experienced in most parts of the country.